



# CHELMER MARATHON LXVIII

**21 October 2018**

**A 2018 Hasler Qualifier**

**Information Pack**





# CHELMER MARATHON LXVIII

Venue: Chelmsford Canoe Club

Where is Chelmsford?

Chelmsford is to the East of London just off the M25, some examples of approximate travel times from other clubs are below;

Bishops Stortford	25 Miles	00:40
Barking & Dagenham	35 Miles	00:45
Cambridge	47 Miles	01:00
Tonbridge	50 Miles	00:55
Royal / Richmond	70 Miles	01:25
Leighton Buzzard	72 Miles	01:35
Elmbridge	75 Miles	01:15
Wey	76 Miles	01:15
Viking Bedford	80 Miles	01:45
Norwich	82 Miles	01:54
Reading	90 Miles	01:40
Falcon Oxford	100 Miles	01:40
Nottingham	150 Miles	02:30

PARKING:

Parking is available at Baddow Road, CM2 7PJ

**Please note that this is different to previous years due to the closure of Wharf Road Car Park, this car park is on the opposite bank to Wharf Road.**



With our City Centre location and limited club space we are unable to offer Free Parking, We have limited space for Disabled parking on-site, please contact us if you have a specific requirement

Trailer parking should be pre-arranged with the club, please advise of any requirement when submitting your entries.



# CHELMER MARATHON LXVIII

## Site and Course Details

Races:

### A - 12 Miles, 10 Portages

Singles Divisions 1, 2 & 3, and Doubles Divisions 2 & 3



### B - 8 Miles, 8 Portages

Singles Divisions 4, 5 & 6, and Doubles Divisions 4, 5 & 6



### C - 3 Miles, 2 Portages

**Buoyancy Aids Compulsory for all Competitors on this Course.**

Singles Divisions 7, 8, 9 & 10 and Doubles Divisions 7, 8 & 9



### D - 2km, 0 Portages

**Buoyancy Aids Compulsory**

U12 Boys, U12 Girls, U10 Boys, U10 Girls



Course Diagrams, Portages in Blue and Turns in Yellow, details of the portages are on the next page.

*All distances are approximate*

Event Timings:

<b>Check In:</b>	9:30 – 11:00
<b>Summer Serie</b>	
<b>Boat Checks:</b>	From 11:00
<b>Briefing:</b>	11:30
<b>A &amp; B Course Access:</b>	11:45
<b>A &amp; B Starts:</b>	12:00
<b>C &amp; D Course Access:</b>	12:15
<b>C &amp; D Starts:</b>	12:30
<b>Protest Window Finish</b>	14:15 (approximately)
<b>Prize Giving:</b>	14:45

*Starts will be approximately 1-2 min apart*

**Please do not aim to arrive before 9:30, as there will be local road and path closures related to the Chelmsford Road Marathon.**



# CHELMER MARATHON LXVIII

The Club Site:

- 1) Check In Desks
- 2) Race Control (Team Leaders & Officials Only)
- 3) Results (outside)
- 4) Ladies Changing & Toilets
- 5) Male Changing
- 6) Food & Drink (First Aid Point)
- 7) Barbecue



Fire Safety:

If the fire alarm sounds, please exit the club house via the nearest exit and club grounds and head to the muster point in front of Mothercare

Toilets:

We have 4 toilets on site, 2 Men's on the left hand side of the Kitchen Area and 2 Ladies on the right hand side of the Kitchen.

Disabled Facilities:

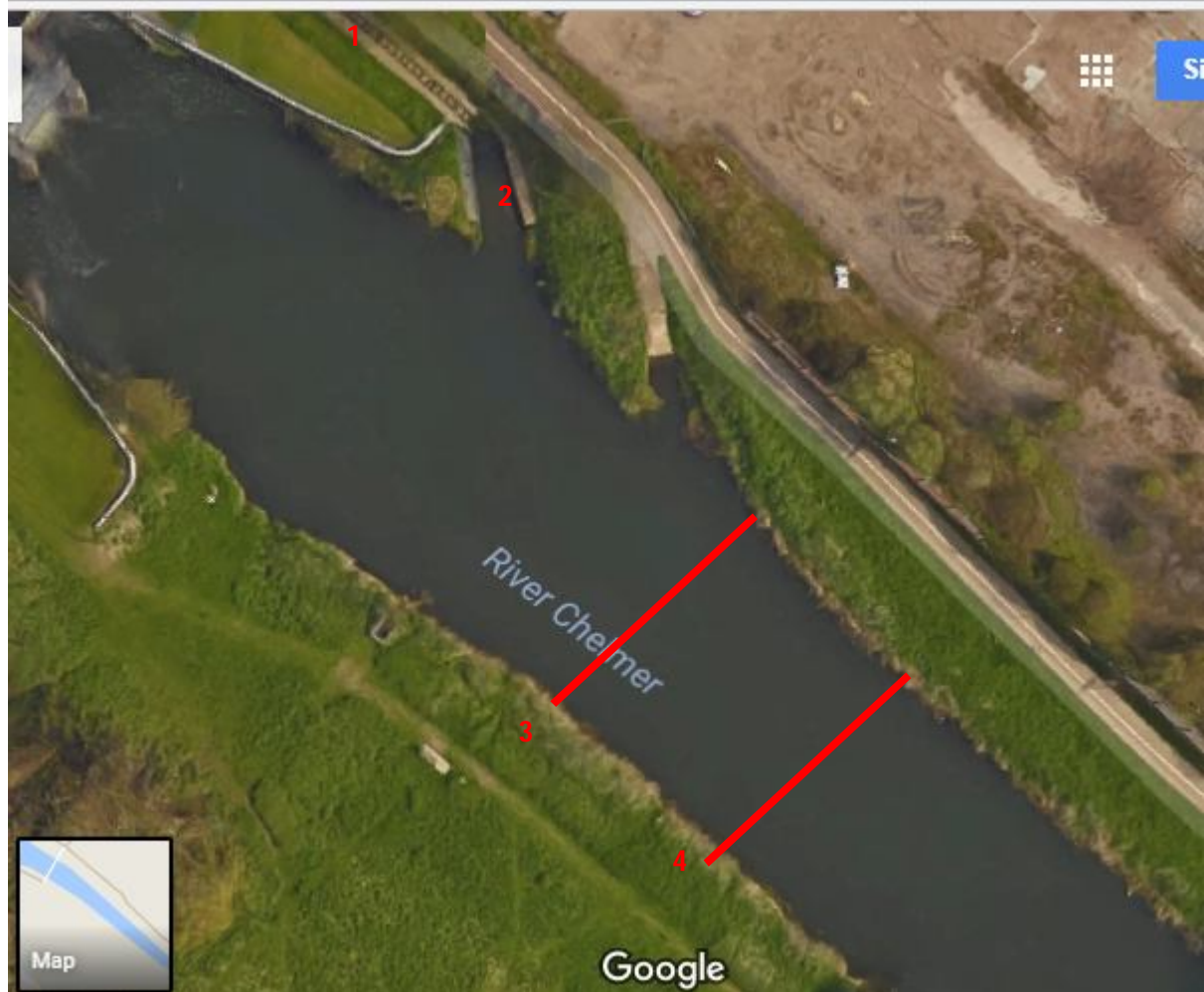
We have separate disabled changing and toilet facilities, please contact the race organiser if you require access to this area.



# CHELMER MARATHON LXVIII

Launching Area:

- 1) Boat Control
- 2) Launching Point
- 3) Pre-Start
- 4) Start





# CHELMER MARATHON LXVIII

## The Course

The course is on the canalised river Chelme, the lead engineer on the canal also worked on the Kennet & Avon, making the style of locks very similar to those seen on the Devizes to Westminster

		Turn for:	Portage For:
	<b>Start</b>		
	<b>Barnes Lock</b> Portage left and right	Lightning	1,2,3,4,5,6,7,8,9,10
	<b>Sandford Lock</b> Portage Left only, <b>Caution:</b> Road Crossing at this lock	7,8,9, 10	1,2,3,4,5,6
	<b>Cuton Lock</b> Portage left and right, right is unkempt and not-advisable		1,2,3,4,5,6
	<b>Stonhams Lock</b> Portage Left & Right <b>Caution:</b> Animal Burrows around get in points.		1,2,3,4,5,6
	<b>Little Baddow Lock</b>	4,5,6	1,2,3
	Paper Mill Lock	1,2,3	



# CHELMER MARATHON LXVIII

## Entries, Rules and Fees

Fees:	Senior:	£8.00 per seat
	Junior:	£6.00 per seat
	Lightning:	£3.50 per seat
	Late Entries:	£5.00 per seat extra
	BCU Day Ticket:	£5.00 per British Canoeing non-member

The above fees include British Canoeing race Levies

Please make cheques payable to: Chelmsford Canoe Club.

Entries: To be received by midnight on Thursday 18 October 2018 using the provided entry spreadsheet.

Payment for entries will only be accepted on the day, please do not post cash or cheques

Entries should be accompanied with Proof of membership of British Canoeing, any not provided in advance will be checked on the day.

Rules: Please Email your entry files to: [Chelmsfordraceentries@gmail.com](mailto:Chelmsfordraceentries@gmail.com)  
BCU Marathon Rules apply as per the racing year book, plus amendments arising from the Marathon Racing ACM.

Approved life jackets or buoyancy aids must be worn by all paddlers ranked or racing in Divisions 7, 8, 9, 10 and all Lightning paddlers and for paddlers in Divisions 6 and above where directed to do so by their team leaders. In certain circumstances buoyancy aids may be made compulsory for all competitors if conditions dictate.

All boats must carry sufficient buoyancy to remain afloat and support their crew in the event of capsize. **In all cases there should be visible additional Buoyancy on Inspection.**

All boats will be subject to a boat check prior to access to the water being granted, any boats not being or meeting additional buoyancy standards will not be allowed access to the water.

Due to area behind the start / finish area being limited, access to the course will be strictly controlled,

Any protests must be submitted by Team Leader Only to race control within 30 Minutes of completion of the final finish

Assistance: Paddlers requiring assistance at portages must declare this in advance with their entries, paddlers not declaring this may receive a time penalty or disqualification.

This only relates to assistance in completing the portage and not assistance given to those in distress.



# CHELMER MARATHON LXVIII

## Important Notices

- Communications:** Official sources of Information on the event will be the Race Organiser (Tom Head) by email ([chelmsfordraceentries@gmail.com](mailto:chelmsfordraceentries@gmail.com)), Chelmsford Canoe Club website, Chelmsford Canoe Club Facebook group & BC Marathon Racing Committee medias.
- Chelmsford Marathon:** This is also taking place on the same date as our event, please note there may be local road closures in place when you plan your route.
- The event will be clear of our club site before our check in opens.
- Bank Safety:** The banks and the tow paths around the river may be slippery, uneven or unstable – and much of the river is in a rural and isolated setting, please exercise caution around these areas if spectating.
- Photos & Social Media:** Please can you tag any photos on Instagram or Twitter with the hashtag #CLMHasler18
- Trailer Parking:** If you intend to bring a trailer, please contact the Race Organiser for details.
- Tall Vehicles Parking:** Access through the height restriction is tightly controlled at the request of the council, this will be open between 9:30 and 10:00 before the race and 15:00 and 15:30 after the event.
- Arrival or departure outside of these windows must be arranged via the Race Organisers.
- Construction Works:** The development of the Wharf Road peninsula is well under way, this area is an active construction area and people should not enter this area.
- Data:** As part of the entry process we will be collecting name, club, BC Number, Age Group (Senior, Masters, Junior and Lightning)
- Proof of BC Membership may be required but not required.
- Results information will be shared with BC via the Regional Hasler Advisor. Results (excluding BC numbers) will be retained for Historic Records.
- Team leaders contact information will be collected on the day for administrative and emergency purposes – this will be destroyed following completion of the event.
- All Data not required for records will be deleted once the race administration is complete and final